

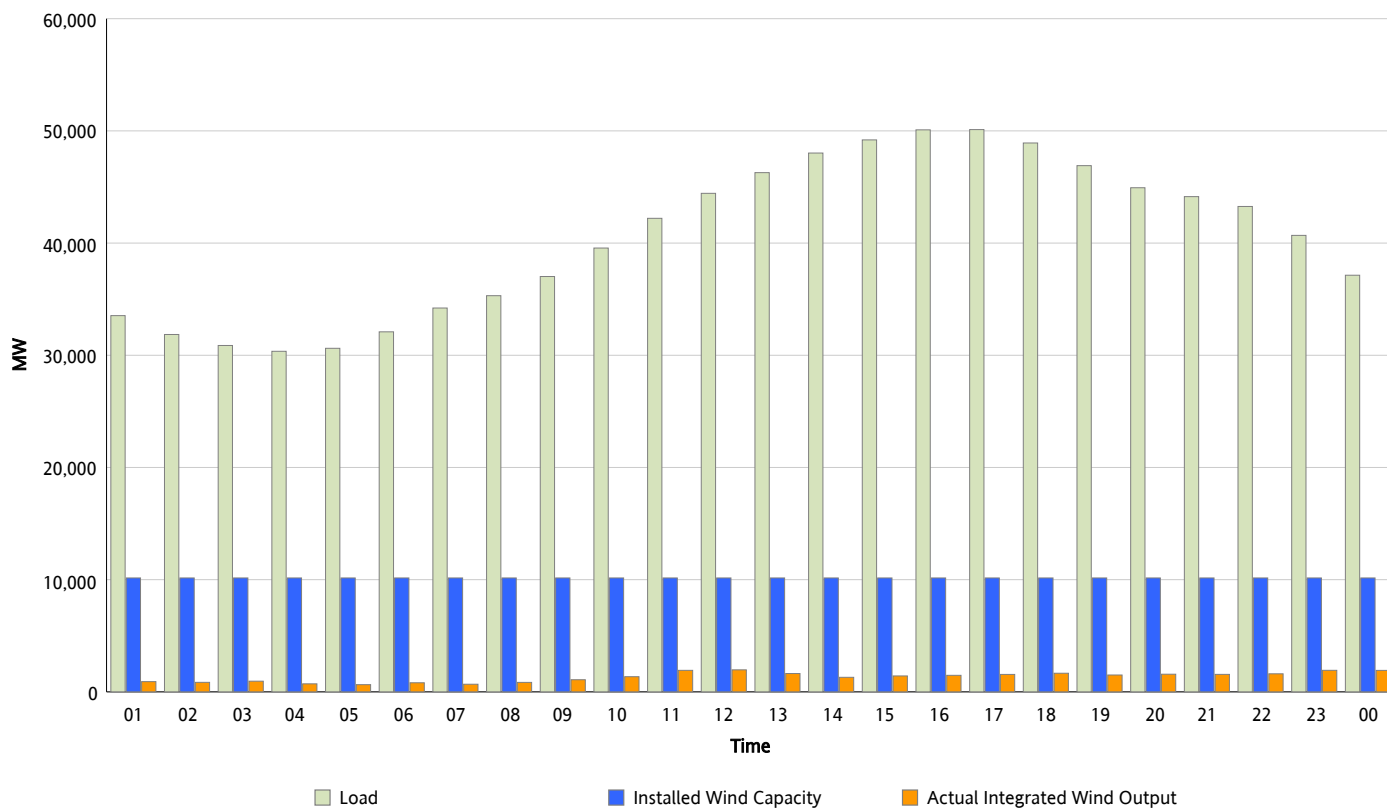


ERCOT Grid Operations

Wind Integration Report : 07/16/2013

| | |
|----------------------|-----------|
| Peak Load | 50,114 MW |
| Load Peak Hour (HE) | 17 |
| Wind Over Peak | 1,556 MW |
| Wind Record 05/02/13 | 9,674 MW |
| Max Wind Value* | 2,074 MW |
| Wind Peak Time | 10:24 |
| Wind Integration % | 4.93 % |

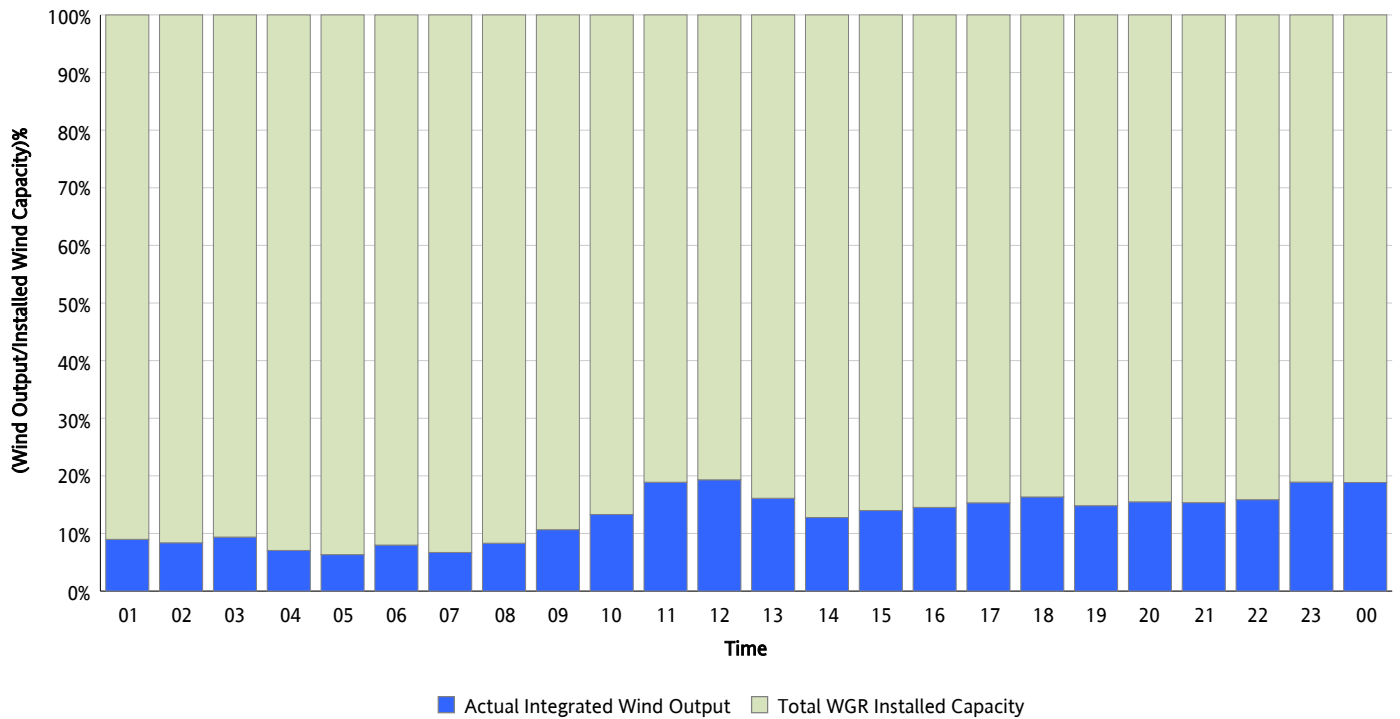
Hourly Average Actual Load vs. Actual Wind Output
07/16/2013



** Wind Record and Wind Max represent instantaneous values and the rest of the values are integrated over the hour*

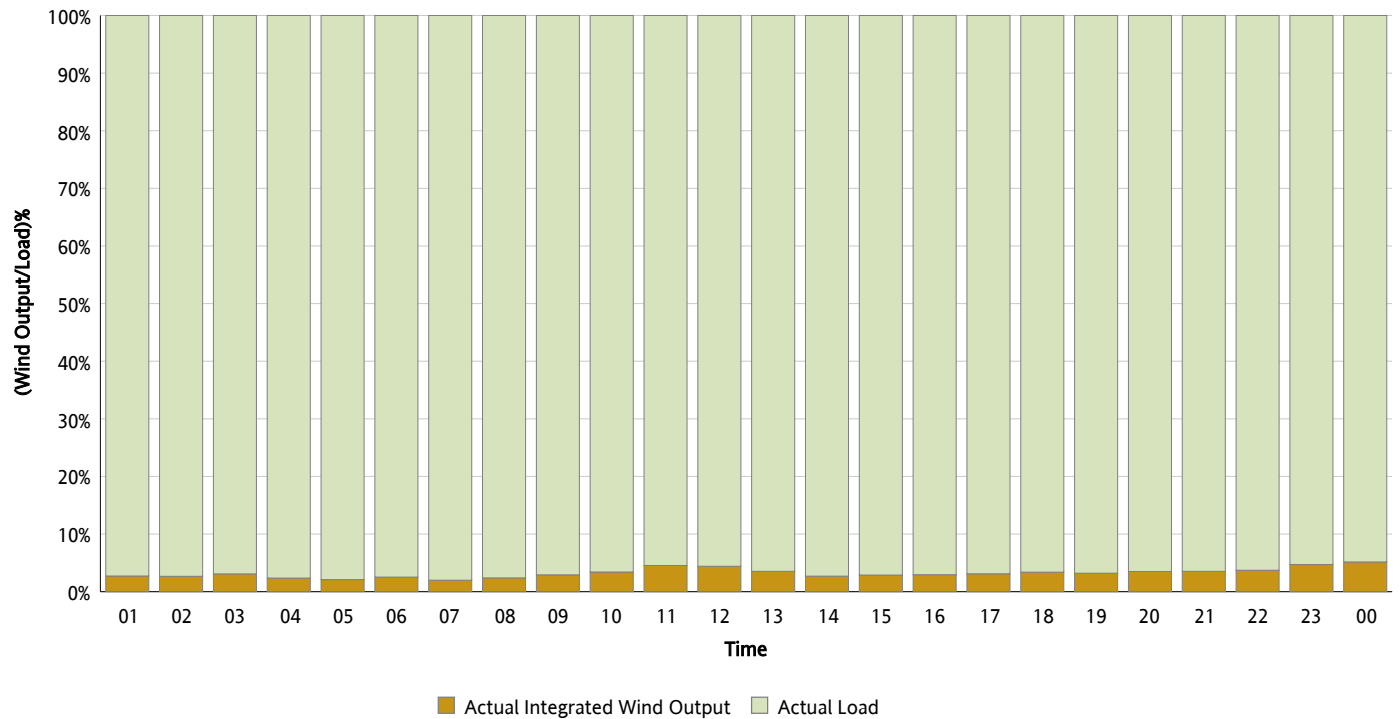
Actual Wind Output as a Percentage of the Total Installed Wind Capacity

07/16/2013



Actual Wind Output as a Percentage of the ERCOT Load

07/16/2013



ERCOT Load vs. Actual Wind Output

07/09/2013 - 07/16/2013

